

extreme

extreme networks

networks



products at a glance



The Leader In Open Converged Networks

Extreme Networks® is a leader in providing enterprises and metro service providers with solutions for building open converged networks.

Our vision of a converged network is one where voice, video, data, and diverse applications and services come together in the same network—regardless of the access method. Whether connected by a wire or wireless, all applications and services appear seamless to the user.

Extreme Networks is committed to providing innovative products, technologies and solutions that help enable you to increase application availability, application performance and application reach. Our “open” approach to the development of standards-based Internet and LAN technologies, allows you to deploy best-of-breed technologies that best solve your business problems.

With operations in the United States and 25 other countries, you can be confident that we have the global reach and understanding to serve you. We have established worldwide 24x7 Technical Assistance Centers (TACs) and professional service facilities in the Americas, Europe, Japan and Asia. This allows you to engage our global organization at a local level in most locations, giving you the assistance you need and allowing you to focus on business, rather than your network infrastructure.



BlackDiamond® 10808

Ideal for network core and data centers where high Gigabit Ethernet density, availability and security are crucial.

- > ExtremeWare® XOS™ modular high availability and extensible operating system
- > Fully redundant, load sharing, hot-swappable management modules, power supplies and I/O modules
- > Hardware support for IPv6, MPLS, and NAT
- > CLEAR-Flow Security Rules Engine

BlackDiamond 8800 Series

Ideal for high-density gigabit and network edge and small to medium network cores.

- > ExtremeWare XOS modular high availability and extensible operating system
- > Fully redundant, load sharing, hot-swappable management modules, power supplies and I/O modules
- > High density 10/100/1000 Power over Ethernet (PoE)
- > Advanced protocols for gigabit and 10 Gigabit Ethernet deployments





BlackDiamond 6800 Series

Ideal for network core and data centers where 10/100 and Gigabit Ethernet density and availability are crucial.

- > ExtremeWare hardened real-time operating system
- > Fully redundant, load sharing, hot-swappable management modules, power supplies and I/O modules
- > Advanced Policy-based QoS and routing capability
- > MPLS module for Layer 2/3 transparent LAN services



Summit®1i/5i/7i

Ideal for Gigabit Ethernet aggregation in small to medium-sized networks.

- > ExtremeWare hardened real-time operating system
- > Redundant power supplies
- > Policy-based QoS and routing in a compact form factor

Alpine® 3800 Series

Ideal for use throughout the network where price/performance ratio is the primary objective.

- > ExtremeWare hardened real-time operating system
- > Fully redundant, load sharing, hot-swappable power supplies and I/O modules
- > Policy-based QoS and routing capability in a modular switch



Summit X450 Series

Ideal for Gigabit Ethernet aggregation and small network cores where high-availability is crucial.

- > ExtremeWare XOS modular high availability and extensible operating system
- > External redundant power supplies
- > Advanced protocols for small core deployment in a small form factor
- > Optional dual 10 Gigabit Ethernet uplink modules





Summit 400 Series

Stackable switches, ideal for Gigabit Ethernet based intelligent services at the edge of the network.

- > ExtremeWare hardened real-time operating system
 - > External redundant power supplies
 - > 20 gigabit full-duplex UniStack™ stacking
 - > Full Layer 2 and Layer 3 high-performance gigabit switch
-



Summit 200 Series

Ideal for 10/100 Mbps Layer 3 switching at the edge of the network.

- > ExtremeWare hardened real-time operating system
 - > Full Layer 2 and Layer 3 features for the budget conscious
 - > 2 gigabit full-duplex UniStack stacking
-



Summit48si

Ideal for 10/100 Mbps Layer 3 switching at the edge of the enterprise or metro network.

- > ExtremeWare hardened real-time operating system
- > Redundant, hot-swappable AC and DC power supplies
- > Policy-based QoS and routing in a compact form factor



Summit 300 Series/Altitude 300

Ideal for advanced 10/100 Mbps services such as IP Telephony and wireless LAN that requires PoE.

- > ExtremeWare hardened real-time operating system
 - > Integrated full power 10/100 PoE and wireless support on every port
 - > Full Layer 2 and Layer 3 feature sets
-

Summit WM Series/Altitude 350-2

Ideal for implementing a high-performance wireless LAN solution with multiple access types.

- > Easy to use access domains for multiple access types
- > Dynamic RF Management
- > Fast Layer 3 voice grade roaming
- > Supports up to 200 Access Points per switch





Sentriant™

Ideal for mitigating rapidly propagating virus/worm-based attacks from inside the network.

- > Integrated deployment mode with BlackDiamond 10808 and CLEAR-Flow to cover the entire network
- > Standalone deployment mode with any switch to cover parts of a network
- > Works off-line with no impact on business continuity even while under attack
- > 2,000 end-points and 1 gigabit throughput

ExtremeWorks® Maintenance and Support

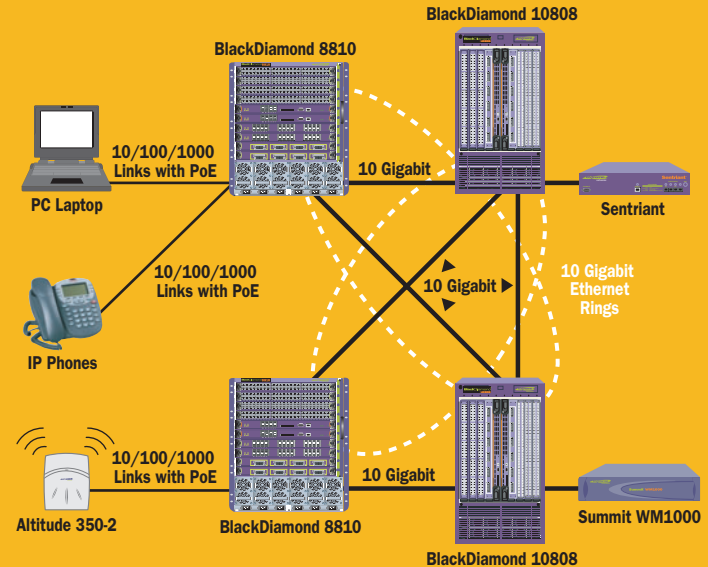
Extreme Networks offers comprehensive service solutions that help you optimize your network 24x7. ExtremeWorks maintenance programs give you the support you need to operate and manage your network on a day-to-day basis, as well as provide you the safety net you need when the unexpected occurs.

Our full service support options include:

- > 24x7 global Technical Assistance Centers (TAC)
- > Software release updates
- > Flexible hardware replacement options – from factory return and replace to four (4) hour advanced hardware replacement
- > Onsite technical assistance options
- > Privileged web access for:
 - Case logging
 - RMA requests
 - Knowledge database

Two-Tier Network Architecture

Our products will allow you to implement a two-tier network. By condensing the traditional three tiers into two tiers, you'll use fewer switches and have improved connections as well as simplified network security.



Management Tools

Extreme Networks family of network management tools automates the management of Layers 2-7 application infrastructures allowing for an overall improved end-user experience.

- > EPICenter® – provides all fault configuration, accounting, performance, and security functions to manage Extreme's multi-layer switching equipment in a converged network
- > EPICenter Policy Manager – provides layer-independent policy enforcement for Layers 1-4
- > ServiceWatch® – delivers powerful, Layers 4-7 monitoring and management for mission-critical network services

Alpine 3804	Alpine 3802	Summit11 Summit5i Summit7i	Summit48si	Summit 200-24	Summit 200-48	Summit 300-24	Summit 300-48	Summit 400	Summit X450
128	64	N/A	48	24	48	24	48	N/A	N/A
64	20	6 to 28	0	2	2	2	4	24-48 plus PoE	24
64	20	2 to 4, plus 6 to 28 Fixed	2	2	2	2	4	4	24
0	0	0	0	0	0	0	0	2	2
Chassis/ 6RU	Chassis/ 4RU	Fixed/ 2RU	Fixed/ 1RU	Stackable/ 1RU	Stackable/ 1RU	Stackable/ 1RU	Stackable/ 2RU	Stackable/ 1RU	Fixed 1RU
32 Gbps	16 Gbps	17.5 Gbps to 64 Gbps	17.5 Gbps	8.8 Gbps	13.6 Gbps	8.8 Gbps	24 Gbps	80-160 Gbps	160 Gbps
No	No	No	No	No	No	No	No	No	No
Yes	Yes	Yes	Yes	No	No	Yes/External	Yes	Yes/External	Yes/External
Yes	Yes	No	No	No	No	Yes	Yes	Yes	No
Yes	Yes	Yes	Yes	Yes	Yes	Yes	Yes	Yes	Yes
BGP4, DVMRP, OSPF, RIP v1/v2, PIM	BGP4, DVMRP, OSPF, RIP v1/v2, PIM	BGP4, DVMRP, OSPF, RIP v1/v2, PIM	BGP4, DVMRP, OSPF, RIP v1/v2, PIM	OSPF, RIP v1/v2, PIM	OSPF, RIP v1/v2, PIM	OSPF, RIP v1/v2, PIM	OSPF, RIP v1/v2, PIM	OSPF, RIP v1/v2, PIM	BGP4, OSPF, RIP v1/v2, PIM
Yes	Yes	Yes	Yes	No	No	No	No	No	No
Yes	Yes	Yes	Yes	Yes	Yes	Yes	Yes	Yes	Yes
Yes	Yes	Yes	Yes	Yes	Yes	Yes	Yes	Yes	Yes
Yes	Yes	Yes	Yes	Yes	Yes	Yes	Yes	Yes	Yes
No	No	No	No	No	No	No	No	No	No
No	No	No	No	No	No	No	No	No	No
Yes	Yes	Yes	Yes	No	No	No	No	No	Yes
Yes	Yes	Yes	Yes	Yes	Yes	Yes	Yes	Yes	Yes
Yes	Yes	Yes	Yes	Yes	Yes	Yes	Yes	Yes	Yes
Yes	Yes	Yes	Yes	Yes	Yes	Yes	Yes	Yes	Yes
Yes	Yes	Yes	Yes	No	No	No	No	No	No
Yes	Yes	No	No	No	No	Yes	Yes	Yes	No
Yes	Yes	No	No	No	No	Yes	Yes	No	No
SNMP, Web, CLI, 4 RMON groups	SNMP, Web, CLI, 4 RMON groups	SNMP, Web, CLI, 4 RMON groups	SNMP, Web, CLI, 4 RMON groups	SNMP, Web, CLI, 4 RMON groups	SNMP, Web, CLI, 4 RMON groups	SNMP, Web, CLI, 4 RMON groups	SNMP, Web, CLI, 4 RMON groups	SNMP, Web, CLI, 4 RMON groups	SNMP, Web, CLI, 4 RMON groups

For more information on the Summit WM series go to: <http://www.extremenetworks.com/products/summit/>
For more information on Sentriant go to: <http://www.extremenetworks.com/products/securityappliances/>

Corporate Headquarters

Extreme Networks
3585 Monroe Street
Santa Clara, CA 95051
United States
Phone +1 408 579 2800

Asia Pacific

Extreme Networks
Unit 1117, Tower 1, Grand Century Place
193 Prince Edward Road West
Kowloon, Hong Kong,
China
Phone +852 2517 1123

Europe, Middle East and Africa

Extreme Networks
Kernkade 2, 2nd floor
Lage Weide, Utrecht 3542 CH
The Netherlands
Phone +31 30 800 5100

Japan

Extreme Networks KK
17F Sumitomo Korakuen Building
1-4-1 Koishikawa
Bunkyo-ku, Tokyo 112-002
Japan
Phone +81 3 5842 4011

Australia

Extreme Networks
Level 20
99 Walker Street
North Sydney, NSW 2060
Australia
Phone +61 2 9657 1348



Extreme Networks, the Extreme Logo, Alpine, BlackDiamond, EPICenter, ExtremeWare, ExtremeWare XOS, ExtremeWorks, Sentriant, ServiceWatch, Summit and UniStack are either registered trademarks or trademarks of Extreme Networks, Inc. in the United States and/or other countries.

© 2005 Extreme Networks, Inc. All rights reserved.
Specifications are subject to change without notice.